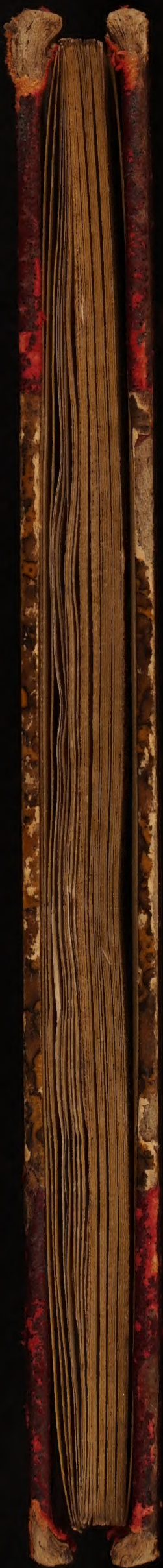






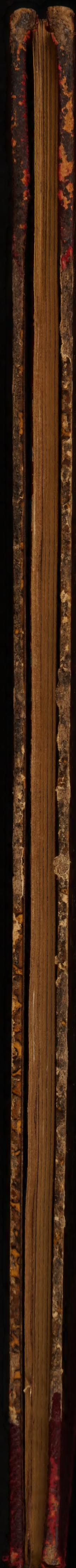
W. Hollar

1663



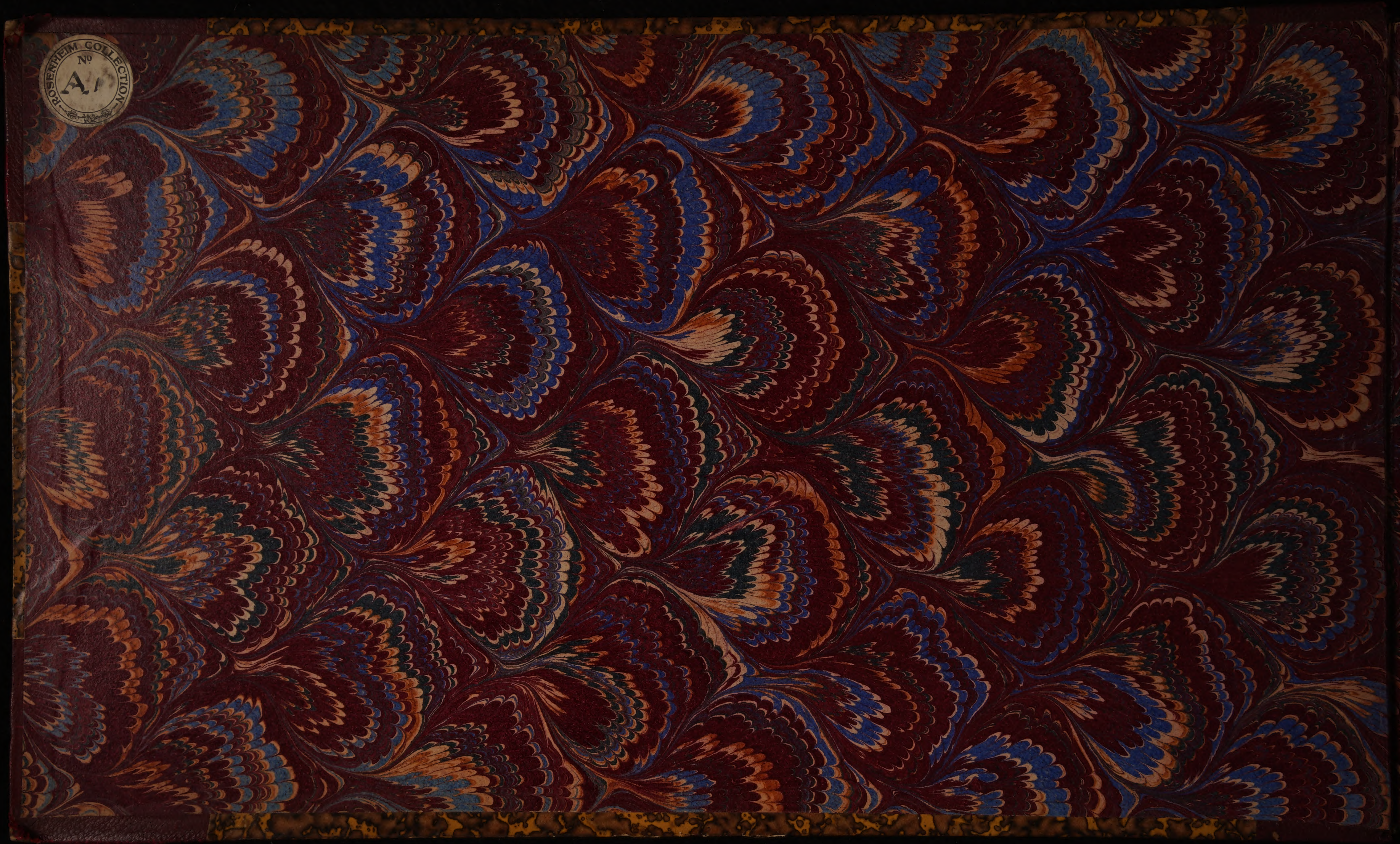








ROSENHEIM COLLECTION  
No. 1









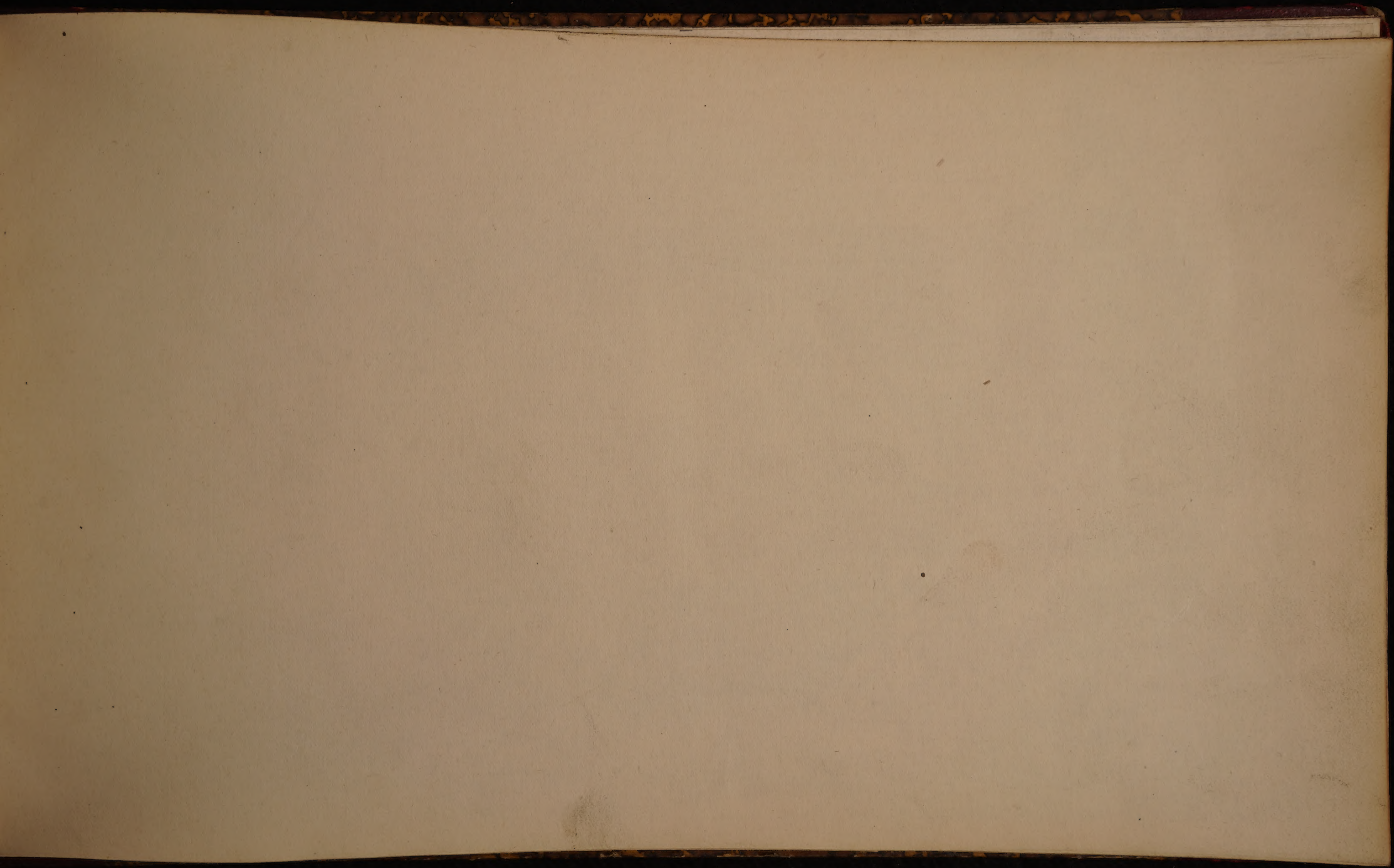
N. XXI 29,210/c

7/2

horse wanting

239







HEIM COLLE  
NO



ANIMALIVM, FERARVM, & BESTIARVM, FLORVM, FRVCTVVM,  
Muscarum, Vermiumq; Icones varia, omnes ad vivum delineata, per  
Wenceslaum Hollar, & in lucem edita. a Petro Stent, Londini, A. 1663.

*A New and perfect Book, of Beasts, Flowers Fruits, butterflies,  
& other Vermine, Exactly drawne after y<sup>e</sup> life & naturall, by W. Hollar,  
Printed and are to be sold, by Peter Stent, at the White Horse in Giltspurr  
street without New-gate, London, A. 1663.*



W. Hollar sculp. 1663.



WELLCOME COLLEC  
No

WELLCOME  
HISTORICAL  
MEDICAL  
LIBRARY





*Buglossa siliustris*

Wild Buglafs

Courants

*Dua Corinthia*

Gryps  
a Griffin

pinum a Pine apple

Winter sweet  
Majorana  
dulas



ARTEM





French Anemone  
Flos Adonidis

a Gilde Rose  
Rosa aurata

Wilde Maigrind  
Calendula silvestris

Leopardus  
A Leopard

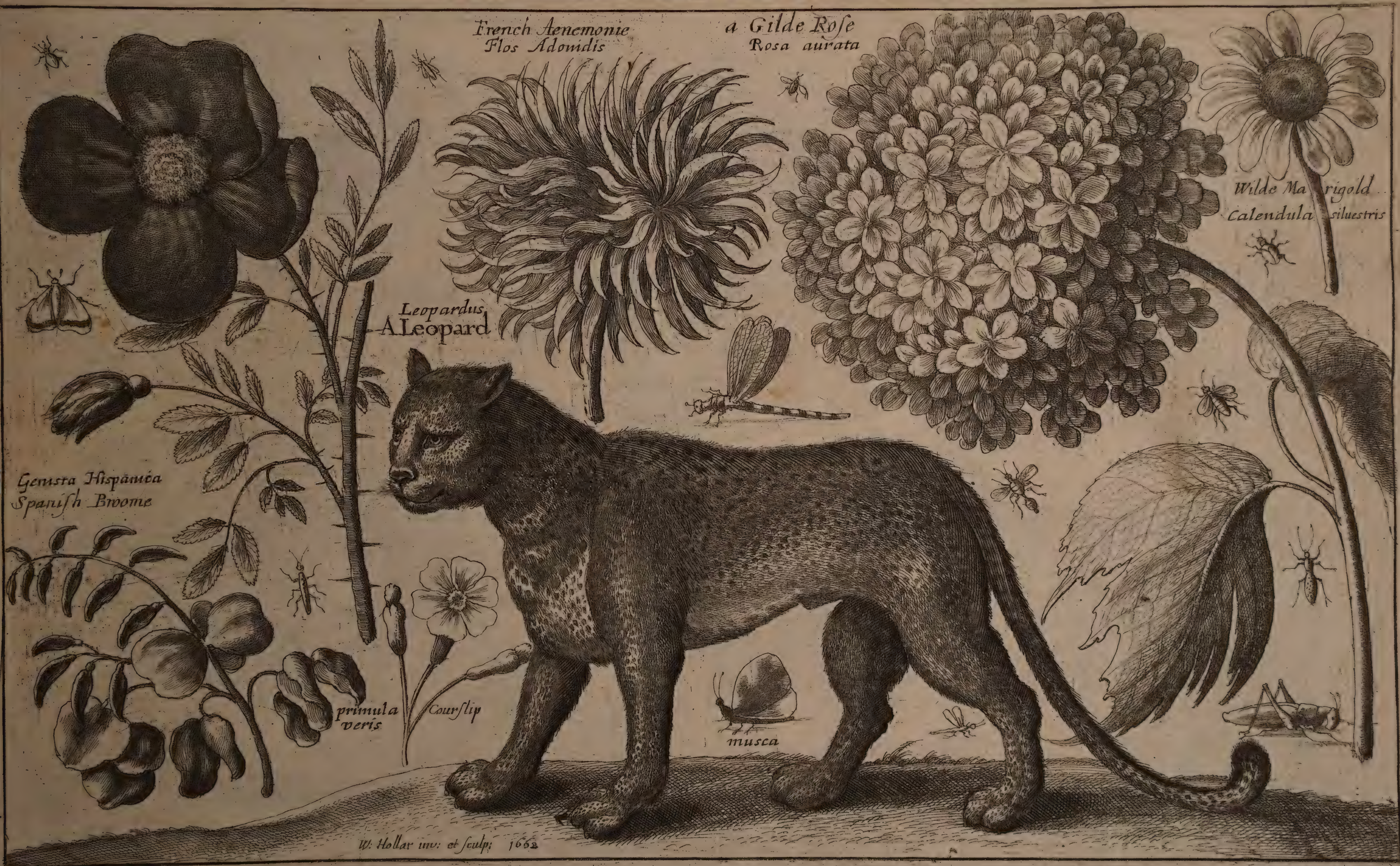
Genista Hispanica  
Spanish Broome

primula  
veris

Courslip

musca

W. Hollar inv. et sculp. 1662





ENHEIM COE





Rubi Idæi  
Rasberies

Carduus  
a Thistle

lilium Album  
a White  
Lilly

Aper  
a Boare

Molossus  
a Mastiff



*[Faint, illegible handwriting covering the majority of the page, possibly bleed-through from the reverse side.]*

*[Faint rectangular stamp or mark.]*

*[Faint rectangular stamp or mark.]*





*Rosa canina odorata*

Sweet  
Bryars

*poma trusima*  
young Apples

Cherries  
*cerasi*

*Ursus*  
a Beare

*columbina*  
a Columbine

Strawberries

Tragra

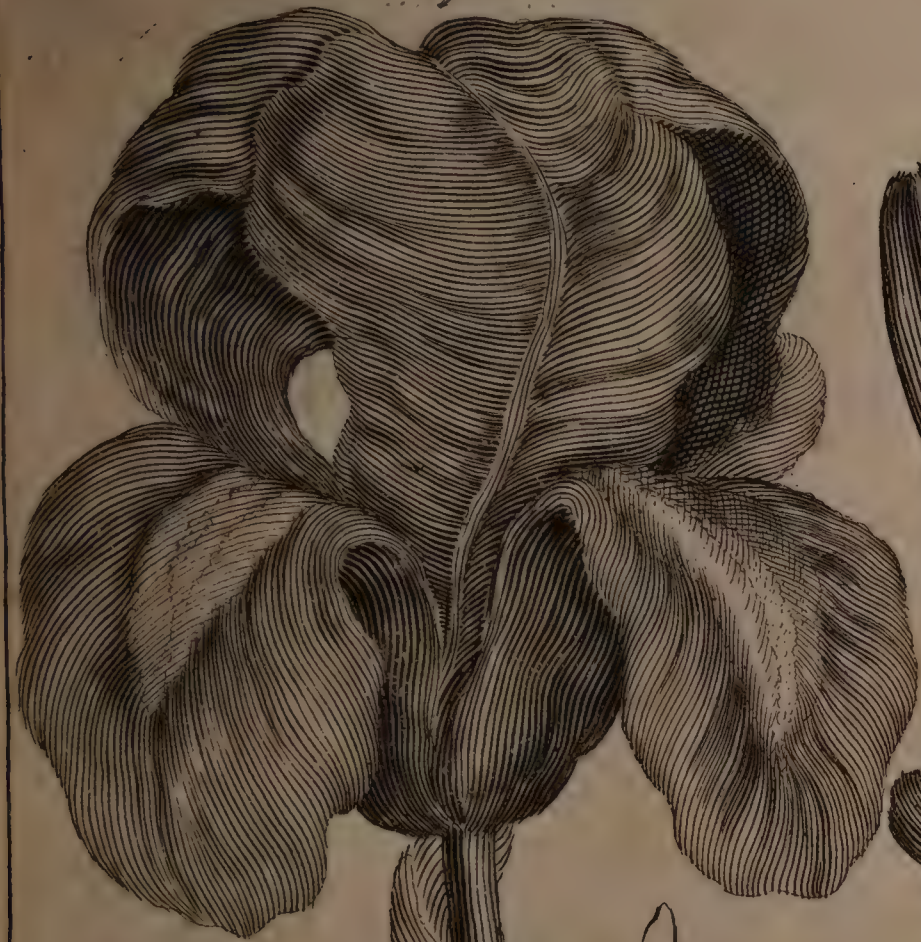
P. Stent Exc.



The first part of the manuscript  
 describes the early history of the  
 settlement and the various  
 events that took place during  
 the first few years of its  
 existence. The second part  
 deals with the economic  
 development of the area and  
 the role of the different  
 industries. The third part  
 discusses the social and  
 cultural life of the community  
 and the impact of the  
 surrounding environment.



Iris a Flower of Luce



Red Lillies  
Lilia rubra



Goos berries  
Bacca Anserina



Anser

a Goose

a Foxxe  
Vulpes



P.W.

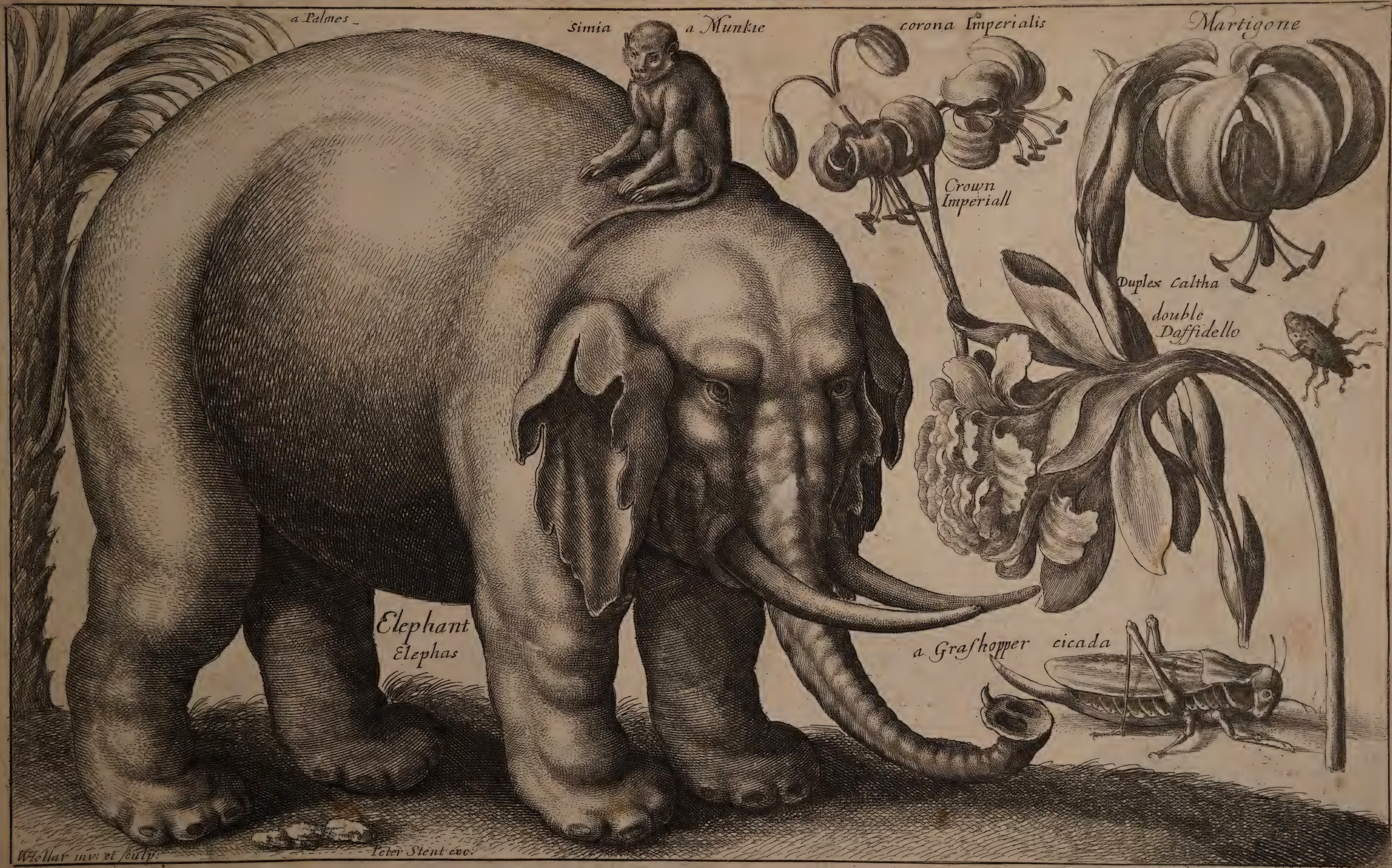
P. Stent Exc.



INHEM







a Palmes

Simia a Munkie

corona Imperialis

Martigone

Elephant  
Elephas

a Grasshopper cicada

Crown  
Imperiall

Duplex Caltha

double  
Daffidello

Wollat inv: et sculp.

Peter. Stent. exc.



C

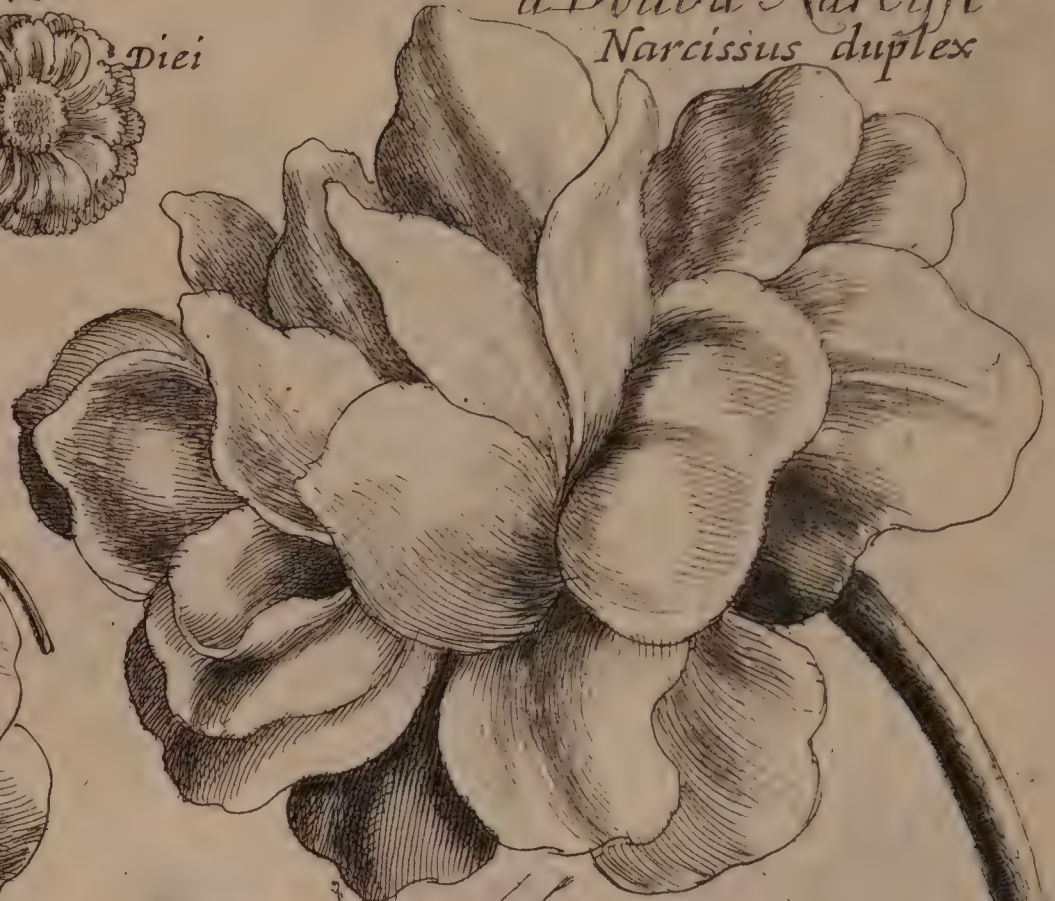


Anomone  
Enomone

a Peonie  
peonia

Desies  
Oculus Diei

a Double Narcisse  
Narcissus duplex



Africane Marigold.

musca



Rosa  
a Rose

Calendula  
Africana

musca



W Hollar delin: et sculp:  
1863.







A White  
Rosa alba

Rose.  
alba

Hearts  
ease.

A Tulip.  
Tulipa

A Lion.  
Leo

The Blossome of Apples  
pomorum flores



W. Hollar inven.

John Dunstall fecit.

P. Stent excu.





1874

1874





W Hollar inv. D Loggan sculp.









Caryophyllus

Lilium  
a Lilly

Hyacinthus  
Hyacinth.

Stock  
Gilliflowers

Campiona Simplex  
Single Campion

Lupus  
a Wolfe

Canis  
a Dogge

Duis.  
a sheep

P. Stent Exc.

P.W. Sculp.



















